

ANNUAL REPORT 2003



JEFFERSON COUNTY BOARD OF ELECTIONS

JANUARY 31, 2004

TABLE OF CONTENTS

INTRODUCTION

Departmental Description

OBJECTIVES AND PERFORMANCE

Types of Services and Assistance
Organizational chart

THE YEAR IN REVIEW

Enrollment 2003
Voter Turnout
Voter Turnout by Legislative district
Statistical information summary
Narrative

VOTER REGISTRATION ACTION PLAN

INTRODUCTION

The Jefferson County Board of Elections conducts all National, State, County, and Town Elections. Although the Board of Elections is a county agency, its structures, responsibilities and duties are mandated by New York State election law, while its administrative procedures, directions, guidelines, rules and regulations are defined by the New York State Board of Elections.

Departmental Description

The board has a full-time staff of four employees with equal representation of Democrats and Republicans as mandated by New York State Election Law. The Board is administered by two part-time commissioners who serve a two-year term. The commissioners are elected by the County committee of each political party and their appointment is confirmed by the County Board of Legislators. The Commissioners each have a deputy who works full-time in the board office and runs the day to day operations of the office. The Deputy Commissioners are assisted by two full-time registration clerks, and two part-time employees.

The staff of the County Board of Elections provides the technical, clerical and mechanical skills necessary to provide services, information and statistical data to County Legislators, other departments, governmental agencies and the public. The Board conducts all Federal, State, County, Town and many of the Village elections in Jefferson County.

OBJECTIVES AND PERFORMANCE

to provide for the registration of voters within Jefferson County, and the conduct of elections as required by federal and state law.



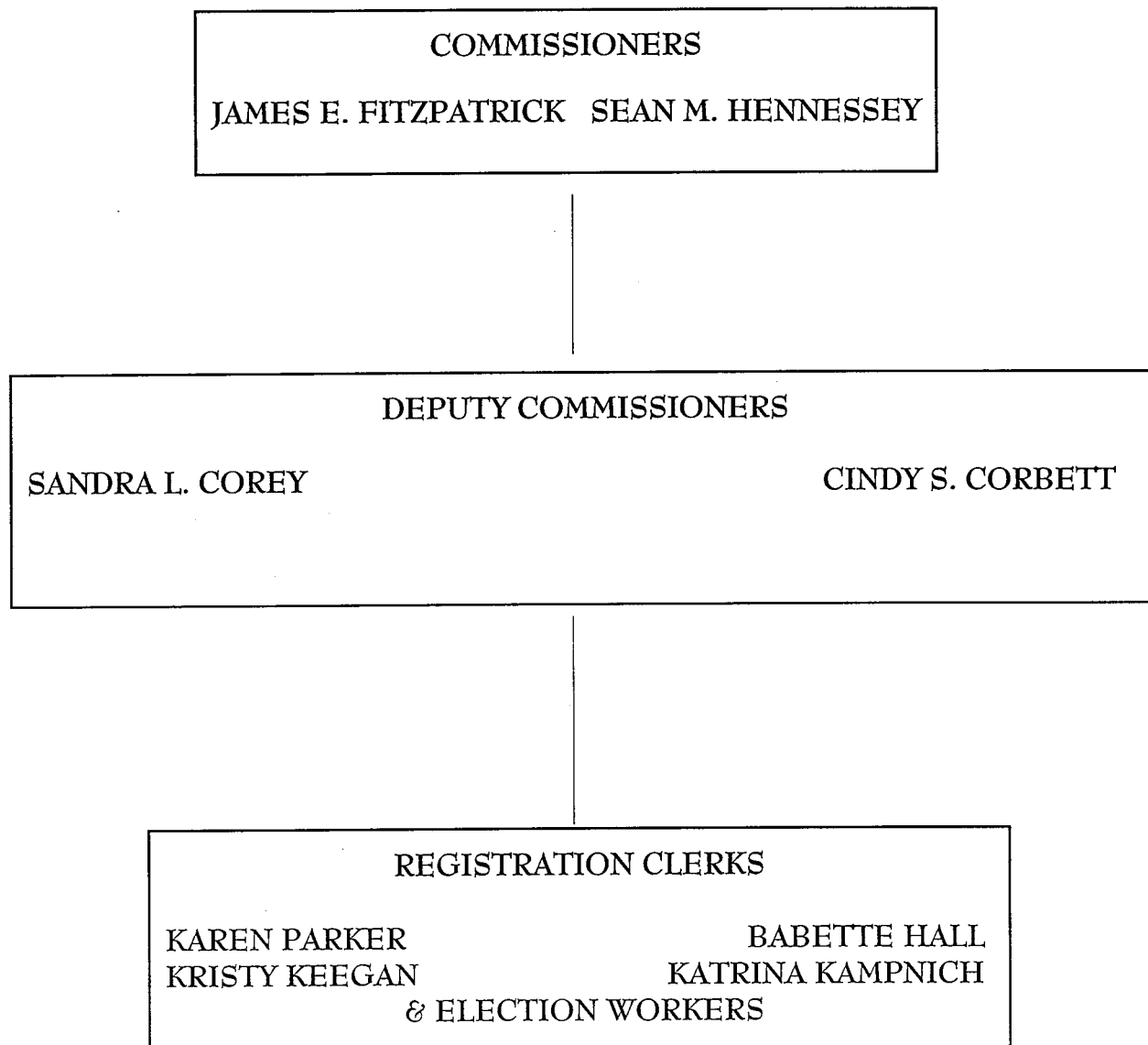
Types of Services and Assistance

- To provide registration forms and assistance to those persons wishing to register
- To provide training of election inspectors in procedures used in elections.
- To provide training of machine custodians in procedures of the set-up and repair of voting machines.
- To provide assistance to Town and Village Clerks, school districts and fire districts relative to their elections.
- To provide a directory of Elected Officials in Jefferson County.
- To provide educational background on the procedures of registering to vote and voting to the schools and organizations.

- To provide lists of registered voters and statistical data on registrations, enrollment and voting.
- To assist other county and state departments.
- To provide assistance to candidates and potential candidates.
- To aid political parties with procedures of the Election Law.
- To conduct Federal, State, County, Town and Village Elections.

ORGANIZATIONAL CHART

JEFFERSON COUNTY BOARD OF ELECTIONS



JEFFERSON COUNTY BOARD OF ELECTION
2003 YEAR END REPORT

Our office has always had four full time workers, two deputy commissioners and two registration clerks. We have needed an extra person for some time but because we need to keep our office equal (one Republican and one Democrat) we saw no way to hire one person. This year we brought up the idea of hiring two part time full time clerks and have each of them come in two days a week and fill in when personnel are on vacation. This worked out perfect. We have an extra person here four days a week and it hasn't cost the county as much as one full time person would have been. Throughout the year we were able to keep the daily work up to date and get the files cleaned up. The full time personnel could take their well earned vacations without having to come back and work overtime to get back on track. The best part is we have two extra people that are learning the system so when we are going through the election time frame these people can answer questions and do the work without one of our full time people having to watch over them.

The main part of 2003 was spent waiting and wondering how and when we would begin to fulfill the federal HAVA Act. Our county was represented by both Commissioners, the Republican Deputy Commissioner, and the Democrat Registration Clerk at the Commissioners Annual Conference in Rochester, NY in January. We learned a great deal of what might be expected of us in the near future. We received a lot of information about the HAVA law and what laws must be changed before we can begin. We were all hoping all of this would be taken care of as quickly as possible so we wouldn't lose any funding from the federal government.

Throughout the winter months we had an ongoing session with cleaning up files. When you are caring for approximately 100,000 records this takes many hours. We also needed to redistrict many of our towns and the City of Watertown due to population changes in the 2000 census. The majority of the county was no problem with the exception of the Town of Leray and the City of Watertown. At the same time we were trying to get the polling places out of the schools. We feel it is safer for our children if we don't use schools for polling places. The schools have never complained and they have always been very helpful and for this we thank them. Some of our new polling places are the State Office Building, Emmanuel Congregational Church, UCC, Watertown Industrial Center, Meadowbrook Apts Community Room, and the Jefferson County Fair Bldg.

April is our annual NYS Board of Election Conference. This was held in Saratoga Springs. The Deputy Commissioners went for the full three days and the Commissioners were there for Thursday only. Again there was much discussion of the new HAVA laws but there still were no real answers. Many laws were discussed that the Election Boards hoped might be passed by our state representatives that would make the HAVA laws a little easier for the BOE's to put into practice. These suggestions have been sent to the Assembly and Senate and hopefully we will see changes made.

In May, our Region which takes in Jefferson, St. Lawrence, Clinton, Essex, Franklin, Lewis, and Oswego Counties had a meeting in Canton at the St. Lawrence County BOE. Our region invited vendors selling the new machines that we must buy in the near future to come and show us the machines so we could become more familiar with them. We actually saw three different type machines. It did help us but none of the machines have been certified by New York State Board of Elections at the present time.

June finds us at the beginning of the “off year” local election year. The signing of petitions begins at the beginning of the month. We had Judicial Delegates and Alternates for all parties, Republican and Conservative party petitions, District Attorney, County Treasurer, 15 Legislative Districts, 21 Townships, and 10 Villages. This added up to 237 designating petitions, 21 independent petitions, and 13 caucus certificates. We had two candidates who asked to be taken off the ballot as candidates as they had been told they would lose their jobs if their name was on the ballot. They were under the Hatch Act regulations and didn’t realize it. We did this for them rather than see them unemployed. July and August brought all of the petitions in to the office. When all of the petitions were in and the smoke had cleared we had to prepare for 13 Republican primaries, 1 Democrat primary, 8 Independence primaries, and 1 non-partisan city primary. It was a very busy schedule of events.

In August we had our yearly schooling for our election inspectors. This year we trained and tested 271 inspectors. This was done over a three day period with two classes given each day. In the last few years we have had a voting machine and our county machine custodian come to the schooling. He goes over the process of opening and closing the machine and some minor items that could go wrong and how to fix them. He also has anyone who would like to stay after the meeting come up to the machine and he shows them how the machine actually works and then answers any questions concerning the machine. This has really helped because now the inspectors understand the machine better and find it easier to do what they have to do to get through an election day.

Primary Elections were held in September. We had 10 Republican town primaries, 2 Republican Village primaries, 1 Republican party primary, 1 Democrat town primary, 2 Independence town primary, 4 Independence Legislator primaries, and a Non Partisan Primary for the City of Watertown. It was a very busy election.

We have a custodian school two or three weeks before every election. Each of the custodians come in and pick up their machine supplies and the county machine custodian sets up a machine to show them what they need to do. This works out well and we have fewer machine problems because of it.

All of our years work comes to an end on November 4. Even though many call this election an “off year” election it could not be farther from the truth. Everything that needs to be done for an election - letters to candidates, setting up ballots, working with complaints, etc - is totally done by the local board of elections. It’s very busy and takes a lot of planning to make everything come out without any snares. This year we were very fortunate and all of our hard work paid off. We had very few problems on election day and we had all of the results in and on line before 10:00 PM. Of course our work for this momentous day has only just begun. We still have to check out all of the absentee ballots to the books to make sure no one voted in person that filled out an absentee, investigate all of the Affidavit Ballots to make sure they can be counted, and then count all paper ballots and check all of the numbers. Once the counting is complete we have to put all of the results on paper. The results have to be sent to the necessary officials and a notice put in the paper. We all breath a sigh of relief when we have boxed up the last district and set it on the back shelf. It’s over....

BUT is it over or have we just begun?? We’re now on that well oiled wheel preparing for the next general election. It’s only 11 months away and we have so much to do!

2003 ANNUAL STATISTICAL INFORMATION REPORT

PAGE 1

COUNTY Jefferson

DATE 1-04

FINANCIAL SUMMARY

BUDGET

TOTAL BUDGET FOR 2003	\$ 238,595
AMOUNT 2003 BUDGET INCREASE OR (DECREASE) FROM LAST YEAR'S BUDGET	\$ +11,432
AMOUNT APPROPRIATED FOR 2003	
SALARIES <small>(SS, Retirement, Health, Work Comp)</small>	\$ 131,842
PRINTING	\$ 33,000
SUPPLIES	\$ 33,256
TRAINING	\$ 4,000

**STAFF SUMMARY
COMMISSIONERS**

DEMOCRATIC COMMISSIONER SALARY	\$ 2,490
REPUBLICAN COMMISSIONER SALARY	\$ 2,490
2 OR 4 YEAR TERM	2
FULL OR PART TIME	part-time

DEPUTY COMMISSIONERS

DEMOCRATIC DEPUTY SALARY	\$ 34,110
REPUBLICAN DEPUTY SALARY	\$ 34,110
FULL OR PART TIME	Full

EMPLOYEES (EXCLUDE COMMISSIONERS & DEPUTIES)

NUMBER OF FULL TIME BOARD EMPLOYEES	2
NUMBER OF PART TIME BOARD EMPLOYEES	2
NUMBER OF TEMPORARY OR SEASONAL BOARD EMPLOYEES	30

INSPECTOR INFORMATION SUMMARY

TRAINING AND SALARY

NUMBER OF INSPECTORS APPOINTED	364
NUMBER OF INSPECTORS ATTENDING CLASS	271
NUMBER OF INSPECTORS WHO TOOK EXAM	271
NUMBER OF INSPECTORS WHO FAILED EXAM	0
NUMBER OF ALTERNATE INSPECTORS APPOINTED AND TRAINED	62
NUMBER OF CLASSES GIVEN	6
CLASS SIZE	70
AVERAGE LENGTH OF CLASS SESSION	3 hrs.
INSPECTOR SALARY RANGE (IF YOU HAVE A COUNTY-WIDE SALARY ENTER THAT AMOUNT IN BOTH THE LOW AND HIGH BOX)	LOW \$[6. ⁰⁰] HIGH \$[10. ⁰⁰]
RATE OF PAY FOR INSPECTORS ATTENDING TRAINING SESSION	\$ (varies)
NUMBER OF PEOPLE WHO CHECK MAIL REG OR CALLED BECAUSE OF MAIL CHECK CARD ASKING TO BE PUT ON LIST AS INSPECTOR	63

POLLING SITE SUMMARY

NUMBER OF POLLING SITES IN COUNTY	91
NUMBER OF POLLING SITES ACCESSIBLE TO HANDICAPPED	91
NUMBER OF ELECTION DISTRICTS IN COUNTY	91

VOTING EQUIPMENT SUMMARY

NUMBER OF VOTING MACHINES	91
WHO OWNS VOTING MACHINES	Town / City
WHO MAINTAINS VOTING MACHINES	Town / City
NUMBER OF VOTING MACHINES ACCESSIBLE TO HANDICAPPED	1 per town; 4 in City

ELECTION RESULTS

ELECTION NIGHT QUICK RETURNS DONE	<input checked="" type="checkbox"/> COMPUTER <input type="checkbox"/> MANUALLY
RECANVASED AND CERTIFIED RESULTS DONE	<input type="checkbox"/> COMPUTER <input checked="" type="checkbox"/> MANUALLY

PETITIONS

DESIGNATING PETITIONS

NUMBER RECEIVED	237
NUMBER CHALLENGED	2 candidates asked to be taken off
NUMBER OF SPECS FILED	as candidates as they would lose
NUMBER INVALIDATED BY BOARD	their jobs if they were on
NUMBER OF COURT CASES	The ballot - HATCH ACT
NUMBER OF CASES UPHOLDING BOARD POSITION	
NUMBER OF CASES REVERSING BOARD POSITION	

INDEPENDENT PETITIONS

NUMBER RECEIVED	21
NUMBER CHALLENGED	Same two candidates as above.
NUMBER OF SPECS FILED	1
NUMBER INVALIDATED BY BOARD	2
NUMBER OF COURT CASES	0
NUMBER OF CASES UPHOLDING BOARD POSITION	0
NUMBER OF CASES REVERSING BOARD POSITION	0

CAUCUS CERTIFICATES

NUMBER RECEIVED	43 candidates	13
NUMBER CHALLENGED		0
NUMBER OF SPECS FILED		0
NUMBER INVALIDATED BY BOARD		0
NUMBER OF COURT CASES		0
NUMBER OF CASES UPHOLDING BOARD POSITION		0
NUMBER OF CASES REVERSING BOARD POSITION		0

CAMPAIGN FINANCE SUMMARY

NUMBER OF COUNTY COMMITTEE FILERS	14
NUMBER OF CANDIDATE FILERS	
NUMBER OF PAC FILERS	
TOTAL NUMBER OF FILINGS RECEIVED	
NUMBER OF FIVE DAY LETTERS SENT	2
NUMBER OF CURRENT DELINQUENT FILINGS	2
NUMBER REFERRED TO COUNTY ATTORNEY OR DA	0

ABSENTEE AND AFFIDAVIT BALLOT SUMMARY

SEPTEMBER PRIMARY ABSENTEES

NUMBER OF APPLICATIONS RECEIVED	418
NUMBER OF BALLOTS MAILED	418
NUMBER OF BALLOTS RETURNED	253
NUMBER INVALIDATED (NOT SIGNED, DATED AFTER ELECTION, ETC.)	33
NUMBER OF VOTERS WHO VOTED IN PERSON AFTER VOTING ABSENTEE	3

SEPTEMBER PRIMARY AFFIDAVITS

NUMBER OF AFFIDAVITS RECEIVED	38
NUMBER OF AFFIDAVITS COUNTED FOR TRANSFERS/MOVERS	21
NUMBER OF AFFIDAVITS COUNTED FOR OTHER REASONS	2

REASONS FOR REJECTION

TOTAL PRIMARY AFFIDAVITS REJECTED	15
NUMBER NOT SIGNED	3
NUMBER NOT IN DISTRICT	2
NUMBER FILLED OUT INCORRECTLY	0
NOT PROPERLY ENROLLED	8
MISCELLANEOUS (Not registered)	2

SEPTEMBER PRIMARY COURT ORDERS

TOTAL COURT ORDERS PROCESSED	0
------------------------------	---

GENERAL ABSENTEES

NUMBER OF APPLICATIONS RECEIVED	1299
NUMBER OF BALLOTS MAILED	1290
NUMBER OF BALLOTS RETURNED	1052
NUMBER INVALIDATED (NOT SIGNED, DATED AFTER ELECTION, ETC.)	26
NUMBER OF VOTERS WHO VOTED IN PERSON AFTER VOTING ABSENTEE	5

GENERAL AFFIDAVITS

NUMBER OF AFFIDAVITS RECEIVED	77
NUMBER OF AFFIDAVITS COUNTED FOR TRANSFERS/MOVERS	55
NUMBER OF AFFIDAVITS COUNTED FOR OTHER REASONS	11

REASONS FOR REJECTION

TOTAL GENERAL AFFIDAVITS REJECTED	11
NUMBER NOT SIGNED	1
NUMBER NOT IN DISTRICT	1
NUMBER FILLED OUT INCORRECTLY	1
MISCELLANEOUS (Not registered)	8

GENERAL COURT ORDERS

TOTAL COURT ORDERS PROCESSED	5
------------------------------	---

NURSING HOMES ABSENTEE BALLOT PROGRAM

WE PERSONALLY VISIT NURSING HOMES TO DISTRIBUTE ABSENTEE BALLOTS	YES <input type="checkbox"/>	NO <input checked="" type="checkbox"/>
NUMBER OF HOMES VISITED FOR SEPTEMBER PRIMARY	0	
NUMBER OF HOMES VISITED FOR GENERAL	0	
NUMBER OF BALLOTS PROCESSED - PRIMARY AND GENERAL TOGETHER	0	

REGISTRATION AND ENROLLMENT SUMMARY

REGISTRATION

TOTAL NUMBER OF CENTRAL (IN OFFICE) REGISTRATION FORMS PROCESSED	291
TOTAL NUMBER OF MAIL FORMS PROCESSED	11,226

FORMS DISTRIBUTION

TOTAL NUMBER OF MAIL FORMS USED	approximate 16,000
NUMBER OF FORMS ISSUED TO GROUPS	4,060
NUMBER OF FORMS USED IN YOUR OWN OUTREACH PROGRAMS (BANKS, POST OFFICES, TOWN/CITY HALLS, ETC)	4500
NUMBER OF FORMS PROCESSED FROM TAX PACKETS	168

REGISTRATION SUMMARY FROM ALL SOURCES

NUMBER OF NEW REGISTRANTS PROCESSED IN 2003	2639
NUMBER OF MOVERS WITHIN YOUR COUNTY PROCESSED IN 2003	5385
TOTAL NUMBER OF ENROLLMENT CHANGES	846
TOTAL NUMBER OF NAME CHANGES	563
TOTAL NUMBER OF DUPLICATES	878
TOTAL NUMBER OF OTHERS	69

CONFIRMATION NOTICES

TOTAL NUMBER OF CONFIRMATION NOTICES SENT IN 2003	2,145
NUMBER OF PERSONS REREGISTERED AS A RESULT OF YOUR CONFIRMATION NOTICE	

CANCELLATIONS

TOTAL NUMBER OF REGISTRATIONS CANCELLED	1183
NUMBER OF CANCEL NOTICES SENT TO OTHER COUNTIES	363
NUMBER OF CANCEL NOTICES SENT TO SBOE FOR OTHER STATES	448
NUMBER OF PERSONS CANCELLED BY RETURNING POSTAGE - PAID CARD IN CONFIRMATION NOTICE	

GENERAL INFORMATION

NUMBER OF MILITARY VOTERS ON FILE IN YOUR COUNTY	55
NUMBER OF PERM/DISABLED VOTERS ON FILE IN YOUR COUNTY	522
NUMBER OF SPECIAL FEDERAL VOTERS ON FILE IN YOUR COUNTY	4
TOTAL NUMBER OF INACTIVE VOTERS ON FILE AS OF DECEMBER 31, 2003	15,311
DO YOU HAVE A FAX MACHINE IN YOUR OFFICE?	YES <input checked="" type="checkbox"/> NO <input type="checkbox"/>
DO YOU RUN ANY VILLAGE ELECTIONS?	YES <input checked="" type="checkbox"/> NO <input type="checkbox"/>
DO YOU HAVE A WEB SITE (IF SO, PLEASE PROVIDE WEB PAGE ADDRESS BELOW)	YES <input checked="" type="checkbox"/> NO <input type="checkbox"/>

www.co.jefferson.ny.us

2003 IN REVIEW

ENROLLMENT 2003

REGISTERED VOTERS

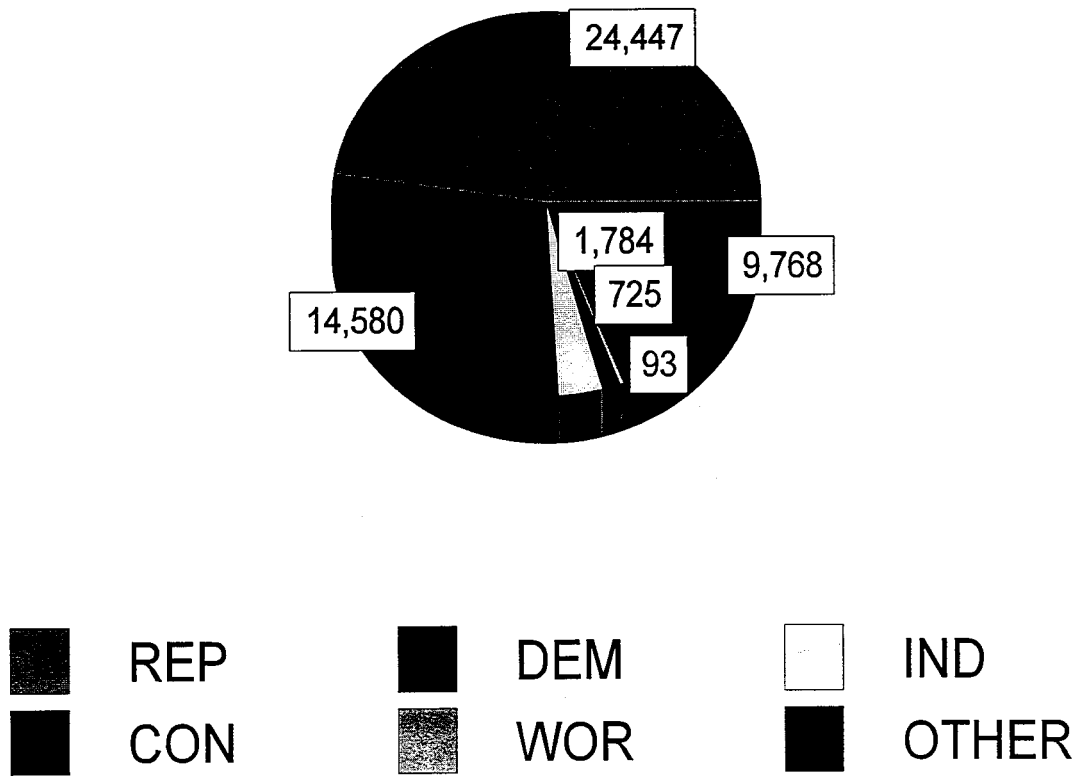


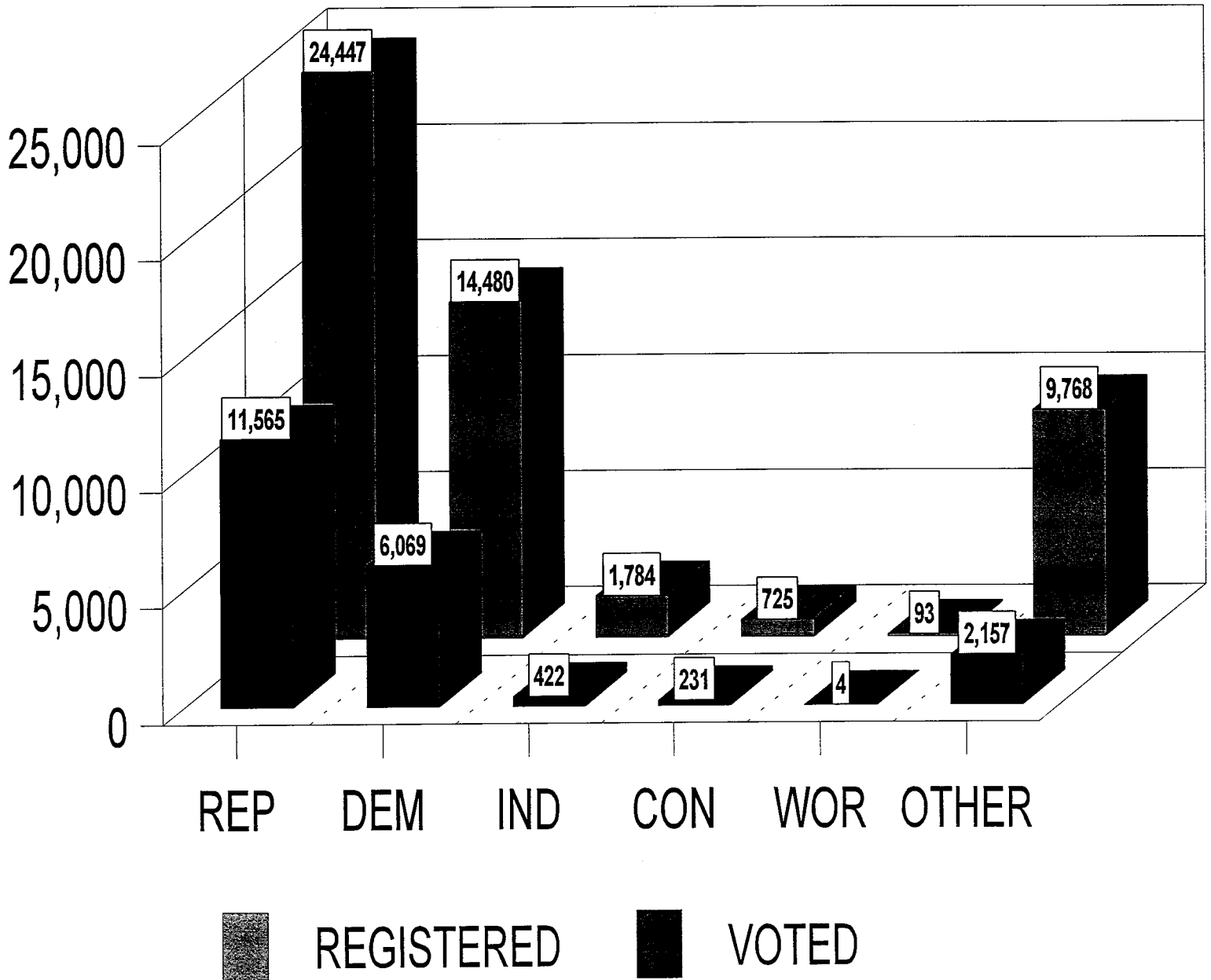
Figure 3

Jefferson County Board Of Elections
County Wide Voter Affiliation Statistics

Voter Status of A - Active

Name	Women	Men	Total
Republican	12,255	12,192	24,447
Democrat	8,563	6,017	14,580
Independence Party	900	884	1,784
Conservative	322	403	725
Working Families	51	42	93
No Party	1,872	1,584	3,456
Blank	2,767	2,787	5,554
Right to Life	124	60	184
Liberal	253	195	448
Green	54	72	126
	27,161	24,236	51,397

VOTER TURNOUT 2003



Jefferson County Board Of Elections
County Wide Election Affiliation Statistics

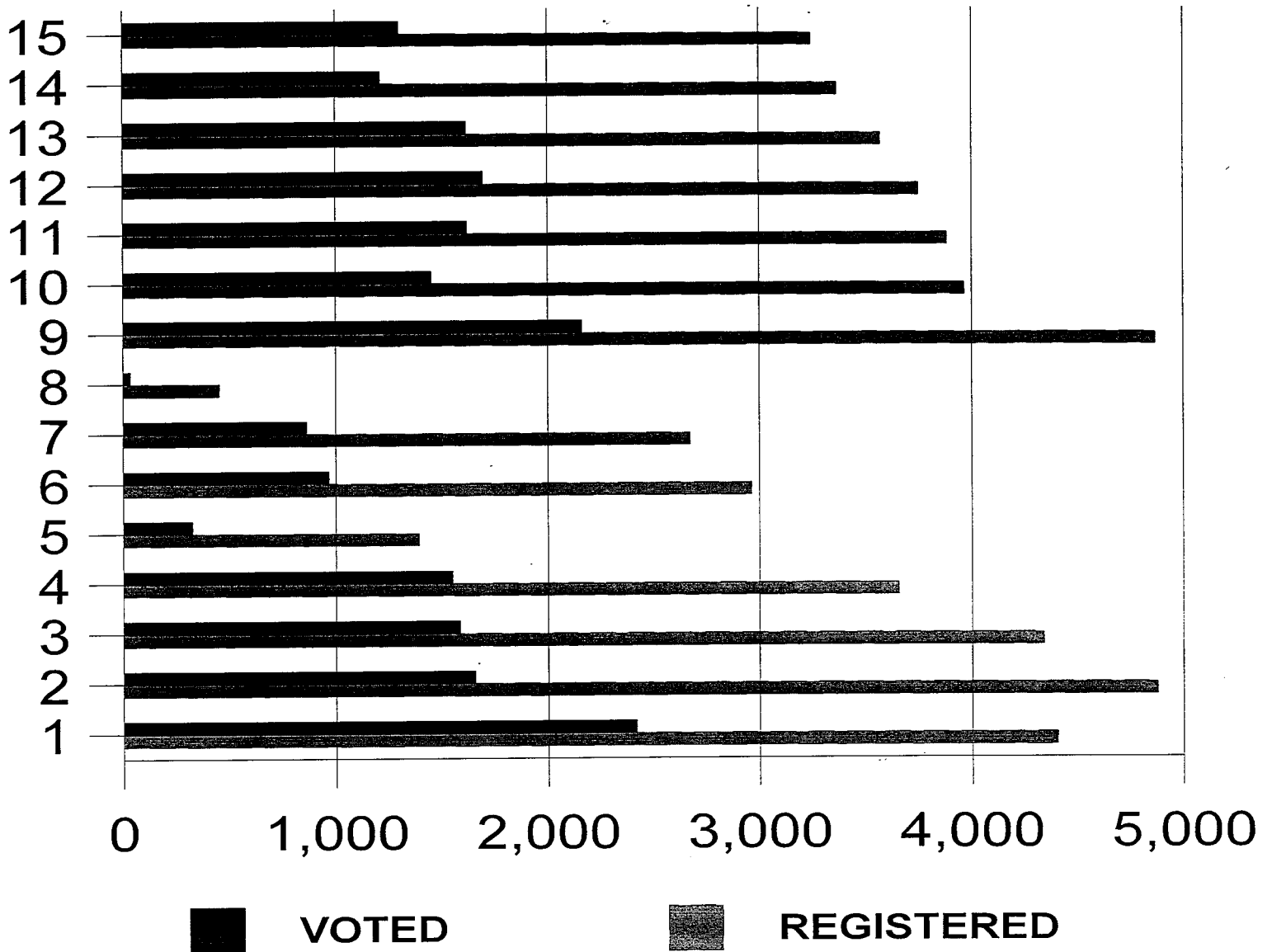
Report Criteria: Voter Status of A - Active
Election GE03

REP DEM IND CON WOR NOP BLK RTL Other Non Aff Enrolled Registered

County Totals

Voters	24,448	47%	14,580	28%	1,784	3%	725	1%	93	0%	3,456	6%	5,554	10%	184	0%	0	0%	574	1%	50,824	51,398	
Voted	11,565	56%	6,069	29%	422	2%	231	1%	4	0%	452	2%	1,540	7%	35	0%	0	0%	130	0%	20,318	20,448	
Turnout		47%		41%		23%		31%		4%		13%		27%	19%		0%	0%		22%		39%	39%

VOTER TURNOUT BY LEGISLATIVE DISTRICT



Jefferson County Board Of Elections
Election Affiliation Statistics by County Legislative Districts

Report Criteria: Voter Status of A - Active
Election GE03

	REP	DEM	IND	CON	WOR	NOP	BLK	RTL	Other	Non Aff	Enrolled	Registered										
County Legislative District #001																						
Voters	2,059	46%	1,348	30%	127	2%	59	1%	6	0%	253	5%	491	11%	19	0%	0	0%	41	0%	4,362	4,403
Voted	1,223	50%	790	32%	50	2%	22	0%	1	0%	71	2%	240	9%	5	0%	0	0%	16	0%	2,402	2,418
Turnout	59%		58%		39%		37%		16%		28%		48%		26%		0%	0%	39%		55%	54%
County Legislative District #002																						
Voters	2,404	49%	1,354	27%	157	3%	72	1%	5	0%	287	5%	541	11%	15	0%	0	0%	43	0%	4,835	4,878
Voted	945	57%	488	29%	24	1%	22	1%	0	0%	51	3%	115	6%	0	0%	0	0%	9	0%	1,645	1,654
Turnout	39%		36%		15%		30%		0%		17%		21%		0%		0%	0%	20%		34%	33%
County Legislative District #003																						
Voters	2,235	51%	1,129	26%	121	2%	54	1%	6	0%	253	5%	467	10%	15	0%	0	0%	58	1%	4,280	4,338
Voted	955	60%	425	26%	22	1%	12	0%	1	0%	45	2%	106	6%	5	0%	0	0%	13	0%	1,571	1,584
Turnout	42%		37%		18%		22%		16%		17%		22%		33%		0%	0%	22%		36%	36%
County Legislative District #004																						
Voters	1,748	47%	932	25%	147	4%	53	1%	9	0%	298	8%	393	10%	11	0%	0	0%	64	1%	3,591	3,655
Voted	885	57%	441	28%	39	2%	18	1%	0	0%	26	1%	110	7%	4	0%	0	0%	25	1%	1,523	1,548
Turnout	50%		47%		26%		33%		0%		8%		27%		36%		0%	0%	39%		42%	42%
County Legislative District #005																						
Voters	627	45%	383	27%	49	3%	20	1%	7	0%	155	11%	140	10%	3	0%	0	0%	6	0%	1,384	1,390
Voted	201	62%	77	23%	3	0%	8	2%	0	0%	4	1%	30	9%	0	0%	0	0%	0	0%	323	323
Turnout	32%		20%		6%		40%		0%		2%		21%		0%		0%	0%	0%		23%	23%
County Legislative District #006																						
Voters	1,166	39%	1,045	35%	103	3%	47	1%	8	0%	222	7%	322	10%	17	0%	0	0%	34	1%	2,930	2,964
Voted	421	43%	435	44%	24	2%	12	1%	0	0%	20	2%	50	5%	2	0%	0	0%	4	0%	964	968
Turnout	36%		41%		23%		25%		0%		9%		15%		11%		0%	0%	11%		32%	32%

Jefferson County Board Of Elections
Election Affiliation Statistics by County Legislative Districts

REP DEM IND CON WOR NOP BLK RTL Other Non Aff Enrolled Registered

County Legislative District #007

Voters	1,197	44%	780	29%	96	3%	35	1%	9	0%	212	7%	306	11%	11	0%	0	0%	27	1%	2,646	2,673	
Voted	480	55%	266	30%	17	1%	5	0%	0	0%	16	1%	73	8%	1	0%	0	0%	5	0%	858	863	
Turnout		40%		34%		17%		14%		0%		7%		23%		9%		0%		18%		32%	32%

County Legislative District #008

Voters	151	33%	117	26%	16	3%	1	0%	1	0%	117	26%	37	8%	0	0%	0	0%	10	2%	440	450
Voted	22	62%	3	8%	0	0%	0	0%	0	0%	2	5%	8	22%	0	0%	0	0%	0	0%	35	35
Turnout		14%		2%		0%		0%		0%	1%			21%		0%		0%		0%	7%	7%

County Legislative District #009

Voters	2,589	53%	1,189	24%	155	3%	56	1%	9	0%	270	5%	547	11%	8	0%	0	0%	45	0%	4,823	4,868	
Voted	1,372	63%	498	23%	46	2%	17	0%	0	0%	51	2%	164	7%	1	0%	0	0%	11	0%	2,149	2,160	
Turnout		52%		41%		29%		30%		0%	18%			29%		12%		0%		24%		44%	44%

County Legislative District #010

Voters	2,115	53%	976	24%	129	3%	65	1%	4	0%	212	5%	428	10%	13	0%	0	0%	23	0%	3,942	3,965	
Voted	922	63%	357	24%	21	1%	22	1%	0	0%	21	1%	104	7%	0	0%	0	0%	3	0%	1,447	1,450	
Turnout		43%		36%		16%		33%		0%	9%			24%		0%		0%		13%		36%	36%

County Legislative District #011

Voters	2,064	53%	1,028	26%	108	2%	59	1%	5	0%	186	4%	385	9%	7	0%	0	0%	42	1%	3,842	3,884	
Voted	1,029	63%	427	26%	22	1%	17	1%	0	0%	21	1%	97	5%	1	0%	0	0%	6	0%	1,614	1,620	
Turnout		49%		41%		20%		28%		0%	11%			25%		14%		0%		14%		42%	41%

County Legislative District #012

Voters	1,862	49%	1,050	28%	124	3%	49	1%	5	0%	231	6%	383	10%	11	0%	0	0%	35	0%	3,715	3,750	
Voted	983	57%	466	27%	27	1%	22	1%	1	0%	35	2%	148	8%	2	0%	0	0%	11	0%	1,684	1,695	
Turnout		52%		44%		21%		44%		20%	15%			38%		18%		0%		31%		45%	45%

Jefferson County Board Of Elections
Election Affiliation Statistics by County Legislative Districts

	REP	DEM	IND	CON	WOR	NOP	BLK	RTL	Other	Non Aff	Enrolled	Registered										
County Legislative District #013																						
Voters	1,510	42%	1,150	32%	143	4%	50	1%	5	0%	255	7%	401	11%	13	0%	0	0%	42	1%	3,527	3,569
Voted	849	52%	536	33%	39	2%	19	1%	1	0%	36	2%	128	7%	2	0%	0	0%	7	0%	1,610	1,617
Turnout	56%		46%		27%		38%		20%		14%		31%		15%		0%		16%		45%	45%

County Legislative District #014																						
Voters	1,507	44%	943	28%	145	4%	48	1%	7	0%	262	7%	384	11%	21	0%	0	0%	49	1%	3,317	3,366
Voted	677	55%	358	29%	40	3%	13	1%	0	0%	29	2%	81	6%	8	0%	0	0%	7	0%	1,206	1,213
Turnout	44%		37%		27%		27%		0%		11%		21%		38%		0%		14%		36%	36%

County Legislative District #015																						
Voters	1,214	37%	1,156	35%	164	5%	57	1%	7	0%	243	7%	329	10%	20	0%	0	0%	55	1%	3,190	3,245
Voted	601	46%	502	38%	48	3%	22	1%	0	0%	24	1%	86	6%	4	0%	0	0%	13	1%	1,287	1,300
Turnout	49%		43%		29%		38%		0%		9%		26%		20%		0%		23%		40%	40%

County Totals																						
Voters	24,448	47%	14,580	28%	1,784	3%	725	1%	93	0%	3,456	6%	5,554	10%	184	0%	0	0%	574	1%	50,824	51,398
Voted	11,565	56%	6,069	29%	422	2%	231	1%	4	0%	452	2%	1,540	7%	35	0%	0	0%	130	0%	20,318	20,448
Turnout	47%		41%		23%		31%		4%		13%		27%		19%		0%		22%		39%	39%